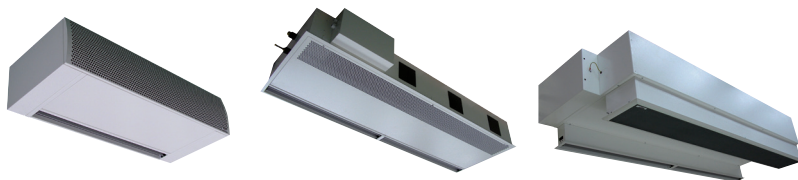


# APPLIED



## VRF Air Curtains

CODE		80	80	112	112	140	140	160	160
<b>Air Curtain Model</b>	<b>RAV-</b>	<b>CT10CT1***M</b>	<b>CT10CT1***L</b>	<b>CT15CT1***M</b>	<b>CT15CT1***L</b>	<b>CT201***M</b>	<b>CT201***L</b>	<b>CT251***M</b>	<b>CT251***L</b>
<b>Capacity Code</b>	<b>hp</b>	<b>3</b>	<b>3</b>	<b>4</b>	<b>4</b>	<b>5</b>	<b>5</b>	<b>6</b>	<b>6</b>
<b>VRF System Interface (factory-fitted)</b>	<b>HP</b>	<b>MMD-ODH1</b>	<b>MMD-ODH1</b>	<b>MMD-ODH1</b>	<b>MMD-ODH1</b>	<b>MMD-ODH1</b>	<b>MMD-ODH1</b>	<b>MMD-ODH1</b>	<b>MMD-ODH1</b>
Heating	Capacity	kW	8.0	8.0	11.2	11.2	14.0	14.0	16.0
	COP		2.63	2.77	2.56	2.93	2.75	3.20	3.27
Air Flow	Standard	l/s	444	614	667	819	889	1228	1433
	Standard	m <sup>3</sup> /h	1600	2210	2400	2950	3200	4420	5160
Door	Power Input Indoor	kW	0.35	0.53	0.53	0.70	0.70	1.05	0.88
	Width	mm	1000	1000	1500	1500	2000	2000	2500
Sound	Maximum Height	m	3.0	3.2	3.0	3.2	3.0	3.2	3.0
	Pressure Level M	dB(A)	54	55	55	56	56	57	57
	Power Level M	dB(A)	69	70	70	71	71	72	73
<b>Free-Hanging Type</b>	<b>RAV-</b>	<b>CT101CH-M</b>	<b>CT101CH-L</b>	<b>CT151CH-M</b>	<b>CT151CH-L</b>	<b>CT201CH-M</b>	<b>CT201CH-L</b>	<b>CT251CH-M</b>	<b>CT251CH-L</b>
Unit	Height x Width x Depth	mm	260 x 1210 x 490	260 x 1210 x 490	260 x 1710 x 490	260 x 1710 x 490	260 x 2210 x 490	260 x 2210 x 490	260 x 2710 x 490
	Weight	kg	48	51	77	80	101	107	132
Pipe Connection	Flare Connection (gas - liquid)	inch	5/8 - 3/8	5/8 - 3/8	5/8 - 3/8	5/8 - 3/8	5/8 - 3/8	5/8 - 3/8	5/8 - 3/8
Electrical	Power Supply	V/ph/Hz	220-240/1/50	220-240/1/50	220-240/1/50	220-240/1/50	220-240/1/50	220-240/1/50	220-240/1/50
	Suggested Fused Supply	A	10	10	10	10	16	10	16
<b>Cassette Type</b>	<b>RAV-</b>	<b>CT101UH-M</b>	<b>CT101UH-L</b>	<b>CT151UH-M</b>	<b>CT151UH-L</b>	<b>CT201UH-M</b>	<b>CT201UH-L</b>	<b>CT251UH-M</b>	<b>CT251UH-L</b>
Unit	Height x Width x Depth	mm	260 x 1050 x 780	260 x 1050 x 780	260 x 1550 x 780	260 x 1550 x 780	260 x 2050 x 780	260 x 2050 x 780	260 x 2550 x 780
	Weight	kg	40	43	95	98	99	105	120
Pipe Connection	Flare Connection (gas - liquid)	inch	5/8 - 3/8	5/8 - 3/8	5/8 - 3/8	5/8 - 3/8	5/8 - 3/8	5/8 - 3/8	5/8 - 3/8
Electrical	Power Supply	V/ph/Hz	220-240/1/50	220-240/1/50	220-240/1/50	220-240/1/50	220-240/1/50	220-240/1/50	220-240/1/50
	Suggested Fused Supply	A	10	10	10	10	10	16	10
<b>Built-In Type</b>	<b>RAV-</b>	<b>CT101BH-M</b>	<b>CT101BH-L</b>	<b>CT151BH-M</b>	<b>CT151BH-L</b>	<b>CT201BH-M</b>	<b>CT201BH-L</b>	<b>CT251BH-M</b>	<b>CT251BH-L</b>
Unit	Height x Width x Depth	mm	405-485 x 1105 x 720	405-485 x 1105 x 720	405-485 x 1605 x 720	405-485 x 1605 x 720	405-485 x 2105 x 720	405-485 x 2105 x 720	405-485 x 2605 x 720
	Weight	kg	71	74	105	108	129	135	170
Pipe Connection	Flare Connection (gas - liquid)	inch	5/8 - 3/8	5/8 - 3/8	5/8 - 3/8	5/8 - 3/8	5/8 - 3/8	5/8 - 3/8	5/8 - 3/8
Electrical	Power Supply	V/ph/Hz	220-240/1/50	220-240/1/50	220-240/1/50	220-240/1/50	220-240/1/50	220-240/1/50	220-240/1/50
	Suggested Fused Supply	A	10	10	10	10	10	16	10

### Accessories

RBC-AMS41E	Remote Controller Built-In Timer	Full control including service functions with fully-programmable 7-day timer
RBC-AMS54E-ES	Lite-Vision Plus Remote Controller	Includes timer and backlight display as well as power-save functions, multilingual
RBC-AS41E	Simplified Controller	Ideal for hotel and basic use applications (no service function available)
RBC-SMF1	Fan Interface	Interface to provide an output to enable an external fan from the unit
RBC-SMT1	CN02 Connector Timer Interface Lead	Lead to provide ON/OFF control from the RBC-AMT32E remote or any central controller
RBC-SMIM2	Indicator Module Mode	Interface to indicate the mode of unit operation output for Cool, Heat and Fan Only
RBC-SMIM3	Indicator Module ON/OFF And Stopping Fault	Interface to indicate unit operation and stopping fault
RBC-SMIM4	Indicator Module ON/OFF, Stopping Fault And Unit Enable	Interface to indicate unit operation and stopping fault and connections to enable the unit