

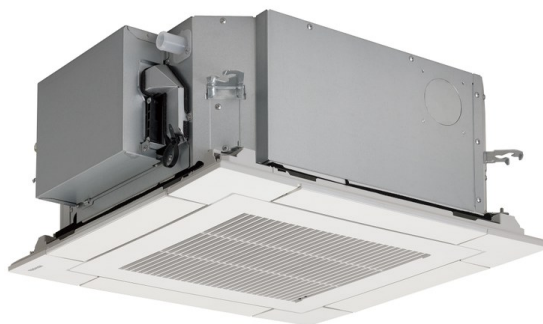
PRODUCT BULLETIN

NEW 7 Series Compact 4-way cassette UPDATED

- Model Reference **MMU-AP***7MH-E**

**** Revision Update ****

TOSHIBA are pleased to announce the NEW 7 series Compact 4-Way air discharge Cassette for VRF systems.



1. Product Line Up

Models		
Capacity Cooling/Heating	Current Model	New Model
1.7/1.9	MMU-AP0056MH1-E	MMU-AP0057MH-E*
2.2/2.5	MMU-AP0074MH1-E	MMU-AP0077MH-E
2.8/3.2	MMU-AP0094MH1-E	MMU-AP0097MH-E
3.6/4.0	MMU-AP0124MH1-E	MMU-AP0127MH-E
4.5/5.0	MMU-AP0154MH1-E	MMU-AP0157MH-E
5.3/6.3	MMU-AP0184MH1-E	MMU-AP0187MH-E

(*3) For MMU-AP0057MH-E will not connect with SMMSi, SHRMi, MiNi-SMMS (made in TCC), Side Blow VRF (made in TCAC)

2. Availability

- ♦ Q1 2017

3. Compatibility

- ♦ SMMS_e, SMMSi*, SHRMi* & MiNi-SMMS_e

*0.6HP unit not compatible

For further information please contact our customer support team on 0870 843 0333, your local representative, your supplier of **TOSHIBA** products or email any enquiries to: - general.enquiries@toshiba-ac.com

4. Features

- ◆ New Design Panel
 - Fits within the T-bar of the ceiling grid: 620mm x 620mm (current model: 700mm x 700mm)
 - Elegant and flat appearance
- ◆ Compact and Thin Chassis
 - The height from ceiling: 256mm (12mm thinner than the current model 268mm)
- ◆ New Functions and Accessories
 - Individual Louver (same function as 4-way cassette MMU-AP***4-E models)
 - Airflow: 5 steps
 - Wireless remote controller as an accessory (*1)
 - Occupancy sensor as an optional (*1)(*2)

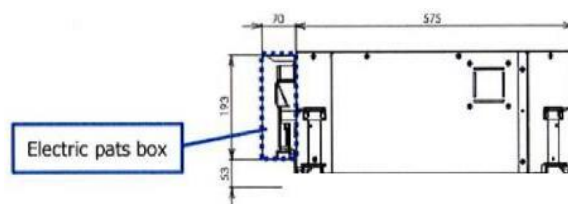
*1 – wireless remote controller kit and occupancy sensor cannot be used on the same indoor unit
 *2 – The function is available only with RBC-AMS54E-ES/EN
- ◆ Compliant with the following European Eco-design regulations
 - ErP-lot 6/21 2018 threshold
 - ErP-lot 30 2018 threshold

5. Accessories

- | | | |
|------------------------------|---|-----------------|
| ◆ Ceiling panel | – | RBC-UM21PG(W)-E |
| ◆ Wireless Remote Controller | – | RBC-AX32UM(W)-E |
| ◆ Occupancy Sensor | – | TCB-SIR41UM-E |
| ◆ Auxiliary Fresh Air Flange | – | TCB-FF101URE2 |

6. Notes

- ◆ New ceiling panel (RBC-UM21PG(W)-E) and current ceiling panel (RBC-UM11PG(W)-E) cannot be exchanged between model types due to different attachment methods
- ◆ Condensate drain pump is installed (standing-up size: 850mm)
- ◆ The size of the drain piping has changed (VP25 to VP20)
- ◆ For light commercial model, mass production will start from the end of March 2017. Detail will come later
- ◆ For IMS model, mass production will start from 2018 (TBD, Only for R32 refrigerant)
- ◆ Electric parts box position is changed to the side of the main unit (fig.1)



7. Combination Table

Combination Chart			
	Factory	Model Name	0.6HP Connection
SMMS-e	TCTC	MMY-MAP0806HT8(J)P-E	OK
		MMY-MAP1006HT8(J)P-E	OK
		MMY-MAP1206HT8(J)P-E	OK
		MMY-MAP1406HT8(J)P-E	OK
		MMY-MAP1606HT8(J)P-E	OK
		MMY-MAP1806HT8(J)P-E	OK
		MMY-MAP2006HT8(J)P-E	OK
		MMY-MAP2206HT8(J)P-E	OK
SMMS-i		MMY-MAP0804HT8(J)P-E	N/A
		MMY-MAP1004HT8(J)P-E	N/A
		MMY-MAP1204HT8(J)P-E	N/A
		MMY-MAP1404HT8(J)P-E	N/A
		MMY-MAP1604HT8(J)P-E	N/A
SHRM-e		MMY-MAP0806FT8(J)P-E	OK
		MMY-MAP1006FT8(J)P-E	OK
		MMY-MAP1206FT8(J)P-E	OK
		MMY-MAP1406FT8(J)P-E	OK
		MMY-MAP1606FT8(J)P-E	OK
		MMY-MAP1806FT8(J)P-E	OK
SHRM-i		MMY-MAP2006FT8(J)P-E	OK
	TCC	MMY-MAP0804FT8(Z)(ZG)-E	N/A
		MMY-MAP1004FT8(Z)(ZG)-E	N/A
		MMY-MAP1204FT8(Z)(ZG)-E	N/A
MMY-MAP1404FT8(Z)(ZG)-E		N/A	
MiNi-SMMS	TCC	MCY-MAP0401HT(Z)(ZG)	N/A
		MCY-MAP0501HT(Z)(ZG)	N/A
		MCY-MAP0601HT(Z)(ZG)	N/A
MiNi-SMMS-e	TCAC	MCY-MHP0404HS8(J)-E	OK
		MCY-MHP0504HS8(J)-E	OK
		MCY-MHP0604HS8(J)-E	OK
		MCY-MHP0404HS(J)-E	OK
		MCY-MHP0504HS(J)-E	OK
		MCY-MHP0604HS(J)-E	OK

8. Specifications

Model name			MMU-	AP0057MH-E	AP0077MH-E	AP0097MH-E	AP0127MH-E	AP0157MH-E	AP0187MH-E
Cooling Capacity (*1)			kW	1.7	2.2	2.8	3.6	4.5	5.6
Heating Capacity (*1)			kW	1.9	2.5	3.2	4.0	5.0	6.3
Electrical characteristics	Power supply		1 phase 50Hz 230V(220V-240V)						
	Running current		A	0.16/0.15	0.23/0.21	0.24/0.22	0.25/0.23	0.28/0.26	0.46/0.46
	Power consumption		kW	0.016/0.016	0.023/0.023	0.025/0.025	0.027/0.027	0.030/0.030	0.052/0.052
	Starting current		A	0.28/0.27	0.41/0.38	0.43/0.39	0.44/0.41	0.50/0.47	0.80/0.81
Appearance	Main Unit		Zinc hot dipping steel plate' Heat-insulating material attached to only upper plate						
	Ceiling Panel (*2)	Model Name	RBC-UM21PG(W)-E						
		Panel Color	Gran White (Mansell 5P69/1)						
Outer dimension	Main Unit	Height (*3)	mm	256					
		Width	mm	575					
		Depth (*4)	mm	575					
	Ceiling Panel	Height (*3)	mm	12					
		Width	mm	620					
		Depth	mm	620					
Total weight	Main Unit		kg	17					
	Ceiling Panel		kg	3					
Heat exchanger			Finned tube						
Soundproof/Heat-insulating material			Non-flammable insulation						
Fan unit	Fan		Turbo fan						
	Standard air flow (M+/M/L+/L)		m3/h	430 (415/400/385/365)	552 (500/462/395/378)	570 (520/468/395/378)	594 (550/504/420/1402)	660 (600/552/480/468)	840 (740/642/540/522)
	Motor		W	60					
Air filter			Standard filter (Long life filter)						
Controller (*2)			Remote controller						
Connecting pipe	Gas side		mm	9.5				12.7	12.7
	Liquid side		mm	6.4					
Drain port (Nominal dia.)			mm	VP20 (Polyvinyl chloride tube)					
Sound pressure level High	(M+/M/L+ /L) (*5)		dB	32 (31/30/29/29)	37 (34/ 33/30/29)	38 (35/33/30/29)	38 (36/34/31/30)	40 (37/35/32/31)	47 (43/39/36/34)
Sound power level High	(M+/M/L+ /L) (*5)		dB	47 (46/45/44/44)	52 (49/48/45/44)	53 (50/48/45/44)	53 (51/49/46/45)	55 (52/50/47/46)	62 (58/54/51/49)

(*1) Cooling/heating capacity is based on single connection operation with standard piping length under Japanese Industrial Standard B 8615 Condition 1.

(*2) Remote controller and ceiling panel are sold separately

(*3) Height from the ceiling.

(*4) Depth doesn't include the Electric parts box.

(*5) M+, L+ will be available with RBC-AMS54E-ES/EN only